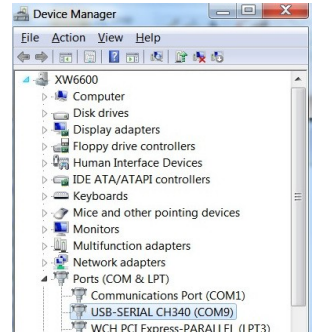


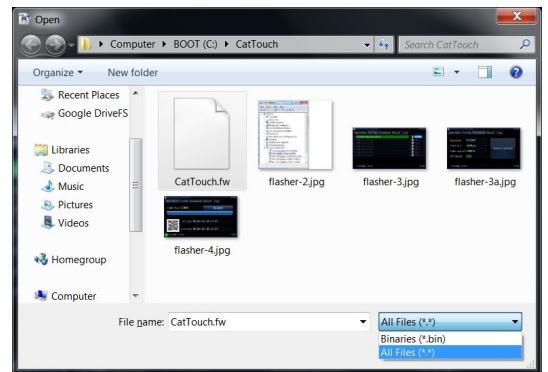
CatTouch low level flashing.

In some circumstances using SD Card to update CatTouch may not work. In which case you can use a Windows computer to update the firmware. This brief guide for users who are able to find, install & resolve any Windows driver issues themselves.

1. Remove any power supply to CatTouch & plug a micro USB B cable on the bottom.
2. Plug USB cable in to your Windows computer, locate and install any required driver.
3. Open device manager and find the serial port allocated to CatTouch. In this example it is shown as **USB-SERIAL (CH340) (COM9)**
4. Go to <https://github.com/nodemcu/nodemcu-flasher> and download the appropriate 32 or 64 bit version for your computer.
5. Download latest firmware at the bottom of the CatTouch product page <https://www.catmeters.com/>
6. Unzip the firmware and save the file CatTouch.fw for later use.
7. Start the flasher program **ESP8266Flasher.exe** (ignore Windows warning)



8. Click on **Config** tab, click the little gear next to the top "Path of binary file" & a popup open dialog will appear. On the lower right, click the pull down and select *.* & select CatTouch.fw
9. Advanced tab setting should be as shown.



10. Click on Operation Tab. Make sure the correct COM port is selected and click Flash(F)
11. After a short time it will complete. CatTouch screen will probably still be white at this stage. Unplug it & reapply power.

